

ACCESS by Ticketing For Sport Stadiums



Entry Level System – How it works – by 4 steps:

The flowing is OTOT's basic stadium access ticketing system. As simple as it is, without POS, it still offer full stadium control, Barcode tickets and RFID Smart Cards, easy to install and operate, high reliability... and more- at a remarkable low price!

1 Printing Tickets:

Barcode tickets are printed in advance by the club or stadium management. The tickets are Barcode, carrying information necessary for later validation. The Smart RFID Cards for season members and club fans, are encoded with the holder ID, and access parameters.



Ticket printer and some tickets



RFID Cards Encoder

2 Selling Tickets:

"One time entry" barcode tickets are sold at the Stadium ticket booths and ticket box offices. "Full season" cards (and VIP cards), are controlled by the club, and distributed directly to the fans. **Note:** Tickets are not printing at POS, they are sold as is, already printed.... **therefore no need for computers in the POS!**



The printed tickets are sent to the ticket booths



Selling the tickets

3 Entry - the turnstile

Entry Turnstiles- electrically controlled- any full height or Tripod turnstile will do! The turnstile let the visitor in one by one, and only after it receives a "release" signal. **Note:** Existing turnstiles may be used.



Tripods Turnstile

4 Entry: The Validators - the ticket's readers that Validate tickets.

Each Turnstile has a Validators. The Validator reads and validates the barcode tickets, and the RFID Smart Cards. Every few Validators are connected to the "Local Controller", or "entrance controller". They work Online with main PC, and also standalone, without any main PC.



"one slot" Validator.



turnstile integration

One System– 2 Types of Ticket's:

1. For one time entry: Barcode paper tickets.

The barcode sign is encrypted to avoid forgery.

The tickets are supplied already pre-printed with stadium's logo (4 colors). Then, before each game, the stadium prints by itself the barcode tickets, with access information.



Printing Barcode tickets



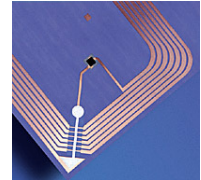
2. For full season fans: RFID Smart Card.

We use Mifare (Philips) cards. It's the best technology, **FIFA approved**, world wide Number One technology...

Those cards permit entry for all the season matches, under pre defined limitations.



RFID Smart Cards



Inside the RFID card

The Challenge:

The Solution:

To design Stadium Entry System with those advance requirements:

OTOT's Standalone Ticketing System!

Requirement: To have only one system, for both types of tickets:
A) One time entry.
B) Full season fans, and VIP.

Solution: OTOT's Access By Ticketing system works with the 2 types of tickets: Barcode paper tickets, for one time entry, and smart RFID PVC cards, for VIP, staff, and full season fans.

Requirement: To insure high standards against forgery of tickets

Solution: RFID Smart Cards are highly protected by their nature... But, Barcode ticket?
Well, yes! Way? Because we use an encryption for barcode tickets, so they are also protected!

Requirement: To provide a system which is fast to install and easy to operate.
The idea is that normal clubs personal can handle the system, without computer's specialists, or IT personal.

Solution: Our Standalone concept doesn't have to use communication lines nor any PC, nor complex Software utilities, to validate tickets... There is no necessity for main database, nor computerized POS to sell tickets, etc., etc. Our system doesn't need those elements, since the turnstiles and Validators can are Standalone. So, Without the complex elements, you left with the simple units, which are easy to install and operate!

Requirement: To achieve high reliability, and minimum downtime.

Solution: Those characteristics cause a very reliable system! Even if one part brakes- **the rest of the system keep working as usual!**

Requirement: To keep low prices, so even small stadiums can have it. And not only low cost to buy- **it must be low cost to operate!!!**

Solution: Without computers, communication, databases, computerized POS, computer specialists, etc. – no wonder the costs are so low... to buy and to operate!

Requirement: To guaranty practicable possibility for future changing / upgrading features of the system, as per customer's requests.

Solution: Since OTOT is the original manufactory of the system, unlike Integrators who buy from sub contractors, we can quickly provide any request.