



## Electronic Ticket Validator

► Much more than just checking a ticket!



## Electronic Ticket Validator (ETV)

Otot's Electronic Ticket Validator - ETV, is an electronic device that can read and validate tickets. The Validator is designed to meet the needs of those venue operators who want to implement a reliable and inexpensive automatic electronic ticket entry system.

Integrated with virtually any type of turnstile, the Validator can be placed at the entrance of any location that visitors pay admission to enter, including :

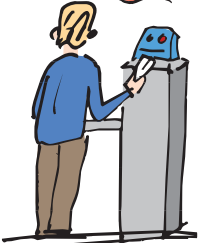
- Museums
- Sport stadiums
- Amusement parks
- Open air events
- Ferry boats
- Cable trains
- Tourist attractions
- Country clubs
- Rock concerts
- etc.



## System Operation



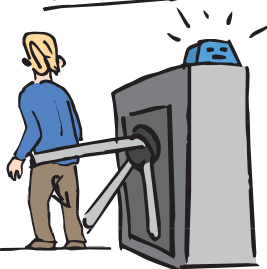
1 Visitors buy tickets as usual at the box office. The tickets, however, are more than paper - they bear electronic information. Tickets may take the form of "smart cards", "magnetic strips", or other ticket media that can be encoded. Tickets may be pre-encoded prior to sale, or encoded at the Point-of-Sale (POS).



2 Once the visitor has a ticket, he/she inserts or presents it to the Validator.

3 The Validator reads the ticket's encoded data, checks and verifies that data according to predefined parameters.

4 If all parameters are found to be in order, the Validator first updates the ticket's stored data, to avoid misuse with that particular ticket, then allows the visitor to enter by means of an electronic signal to release the turnstile or open a gate. Alternatively, an attached printer provides the possibility of printing an approval or receipt.



## Standalone - the best solution !

Until now, the only available systems for venue entry, were very complicated. They required heavy investments in computers, complex software, communication lines, and staff training. Most venue managers require a straightforward, uncomplicated system that can control access accurately and simply. Otot's Standalone Ticket Validator meets this need !

## Turnstile Integration

The combination of the standalone ETV and a turnstile create a perfect solution: an advanced automatic entry system that will reduce manpower costs; increase your revenues by preventing illicit entries; and create many new promotion possibilities. All at a fraction of the cost of complicated, traditional systems !

## ETV features :

### Efficient Self-contained

Otot's ETV is a sophisticated, comprehensive unit. The ETV doesn't need any external computer to verify and cancel a ticket. It has all the computing power, the data, and the controls to efficiently implement automatic site entry.

### Simple Operation

Since no main computer is required, there are no backup problems, no communication lines, no complex software, etc. Each validator works by itself.

### High Reliability

The ETV offers a high degree of reliability, since there is no need for the complex network of communication lines, computers and software problems.

### Easy and Limited Maintenance

Since each unit is standalone, if a problem arises, it is limited to one unit only. All you have to do is replace that unit; all the other standalone units continue to work normally. The site's operations are never endangered.

### Competitive Price

Without expensive hardware or software, the price is very affordable.

### Easy Deployment

Wherever or whenever you want to control an entry, just place the ETV there (often with a turnstile), plug in the power cord – and you're ready for business. It is so fast and easy, that one version is a wheeled, transportable turnstile with built-in ETV.



## Entry Control Methods : evaluation table

Subject	Manual Checking	Computerized Online Systems	Otot's Standalone Ticket Validator
Electronic data in the tickets	None	Read only memory	Read / write memory
Ticket verify and cancellation method	Manual	Each ticket's "serial number" must be verified, and canceled at central computer data base only.	The Validator internally verifies the ticket, and then cancels the ticket's own memory
Reliability	Variable	Moderate	High
Installation costs Operational costs	Recurring salary costs	High Moderate	Moderate Low
Resort / stadium promotion options	—————	Some	Many
Implementation	—————	Very hard	Easy
Management control	—————	High	High
Investment re-fund time	—————	Moderate	Very short



## System Options and Configurations

Otot offers the Validator in a variety of options and configurations to meet virtually any need.

### Basic Validator Features:

- Standalone, self-contained, fully featured, manually inserted ticket validator.
- Accepts many types of tickets: one time, multi-entry, group, etc.
- Manages variety of ticket holders: full-season, VIP, manger, staff, etc.
- Entry permitted based on many optional factors and parameters.
- Built-in counters that reflect visitors flow and other factors.
- On-site extras, like food or special rides, can be prepaid and encoded on the same ticket.

### Tickets & Point of Sale (POS) Options:

- Tickets may be smart cards, magnetic strip or contact-less.
- Tickets may be encoded at selling time at the POS.
- Tickets may be pre-encoded by the venue's office PC, or by Otot's ETV
- Pre-encoded, "ready to use" tickets, may also be purchased from Otot or your local authorized dealer.
- Self-service vending machines can also sell new tickets or add value to existing tickets.

### Optional Features:

- Card Capture: the venue can reuse the same tickets many times.
- Applications may include: time limitation, history prerequisite, etc.
- Printer connection: to print receipt, pass or other document.
- We welcome any request to add special or customized functions!

### Communication and Download Options:

For applications that need to gather data and transactions, we offer:

- Local communication: by RS232 or RS485 port.
- Remote communication: by internal modem for telephone lines.
- Manually download to data logging media.

### Turnstile or Other Barrier Options:

- Normally integrated with tripod turnstile, or full height turnstile.
- Turnstiles may be entry only, exit only, or two-way.
- The ETV integrates easily with any existing turnstiles, gates or electric controlled doors.
- "No barrier" option: human inspector operates the ETV and allows access.

#### Otot Electronics Ltd.

POBox 4059

Kiryat Arie Hi-Tech industrial park,  
Petach Tikva, Israel 49130

Tel: +972-3-9246665

Fax +972-3-9246669

Internet: [www.otot.co.il](http://www.otot.co.il)

Email: [otot@otot.co.il](mailto:otot@otot.co.il)

Local supplier :

